

VINNOE20
Slim, Smart, Super



VINNO Technology (Suzhou) Co., Ltd.

5F, A Building, No.27 Xinfu Rd, Suzhou Industrial Park, 215123, China

Tel: +86 512 62873806

Fax: +86 512 62873801

Email: vinno@vinno.com

Website: www.vinno.com

VINNO reserves the rights to revise the technical specifications if needed.



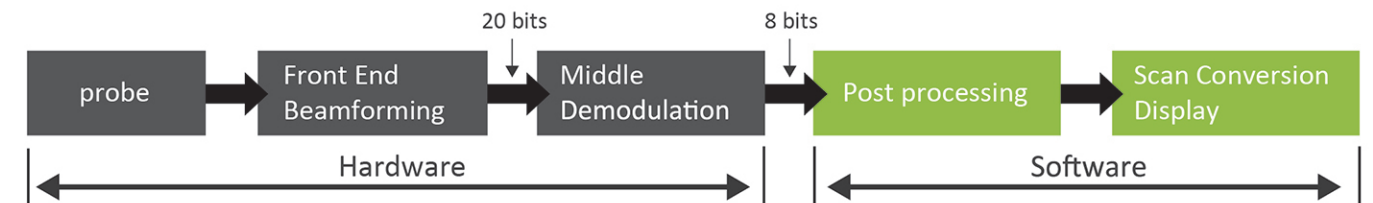
VINNOE20

E20 is fully featured in a slim and compact solution. Its utility and mobility fits in almost any clinical application. Its unique 3D/4D function delivers complete obstetric solution.

- » Innovative platform, State of the art technology
- » Super image quality, Smart experience
- » Slim and compact design, high efficient connectivity

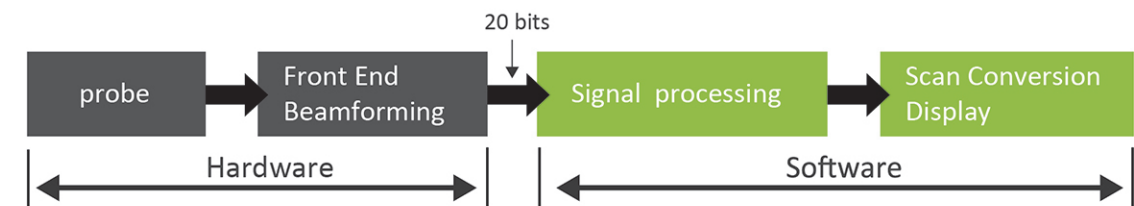
Innovative platform, states of the Art Technology

Traditional Ultrasound Platform — Image data processing platform



Innovative RF Ultrasound Platform

RF signal data processing platform for better resolution and definition



✓ Bigger data to compute for better image quality.

✓ Non-linear demodulation to strong signal.

✓ More accurate and higher step calculation.

✓ Processing algorithm based on signal data, not image data.

✓ Flexible algorithm on data processing.

VTissue

With RF data, sound speed automatically match with certain tissue in order to be enhanced, such as calculus.

VFusion

Compounding technology combined together with RF platform, VFusion helps improve the image information, enhance contrast resolution and reduce the noises.

VSpeckle

Thanks to Vinno RF platform, VSpeckle can adaptively enhances contrast and reduces speckle, haze and other artifacts.



Super image quality, Smart experience

Basic Function

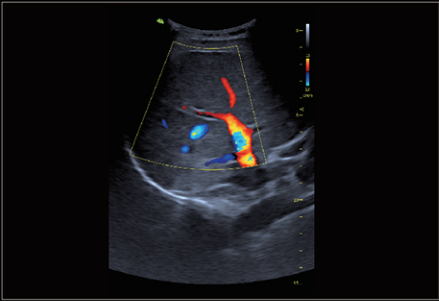
- » VLuminous Flow
- » Needle enhancement
- » Pview
- » Tissue Doppler (TD)
- » Tissue Velocity Imaging (TVI)

Advanced Imaging Technology

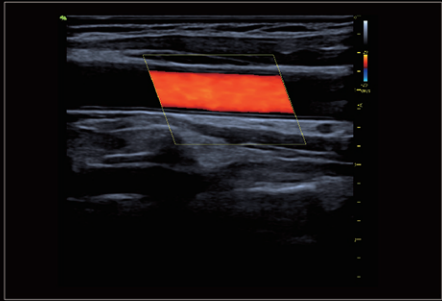
- » Elastic imaging
- » Live IMT
- » 2D auto follicle
- » VFusion
- » Advanced VSpeckle
- » VTissue
- » Color M mode

Leading 3D/4D Technology

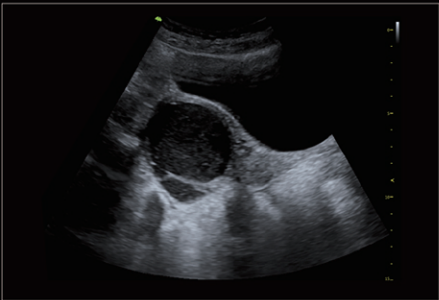
- » MCut
- » Magic Cut
- » Free View
- » Auto NT
- » Smart touch panel 3D/4D operation



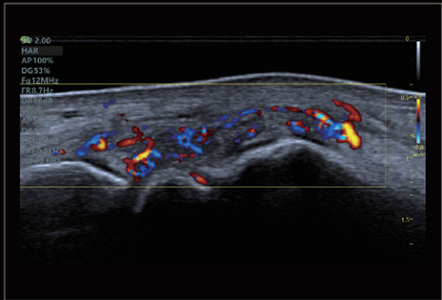
Portal Vein Flow



Carotid



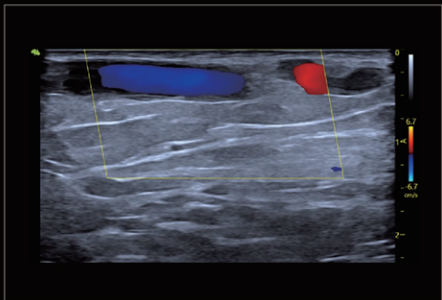
Cyst



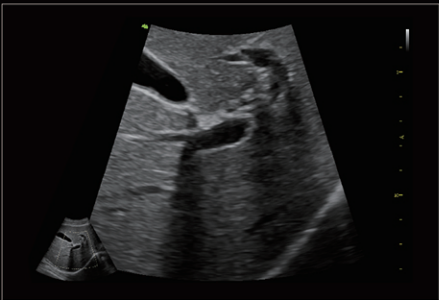
Finger Joint Blood Flow



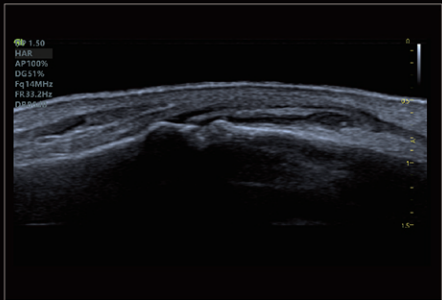
Abdomen



Lower Vessels



Abdomen Zoom



Phalanx

Slim and Compact Design, High Efficient Connectivity

- » Super image quality , Smart experience
- » Swiveling and height adjustable operation panel
- » Articulating display with 19 inch LED screen
- » Pinless flat probe connection
- » Front USB ports position
- » Fast Connectivity: bluetooth/ WIFI/ LAN/ DICOM3.0



Versatile Transducers



F2-5C Broadband Curved Array

- Applications: Abdomen, OB/Gyn, Urology, Pediatric



D3-6C Broadband Curved Array Volume Probe

- Applications: Abdomen, OB/Gyn, urology



G4-9M Broadband Micro Convex array

- Applications: Pediatric, Abdomen, Cardiac



G4-9E Broadband Micro Convex Endocavity Array

- Applications: OB/Gyn, Urology



F4-9E Broadband Micro Convex Endocavity Array

- Applications: OB/Gyn, Urology



X4-12L Broadband Linear Array

- Applications: Vascular, Small Parts, MSK, Nerve



F4-12L Broadband Linear Array

- Applications: Vascular, Small Parts, MSK, Nerve



G1-4P Phased Array

- Applications: Cardiac, Abdomen, OB/Gyn, Urology